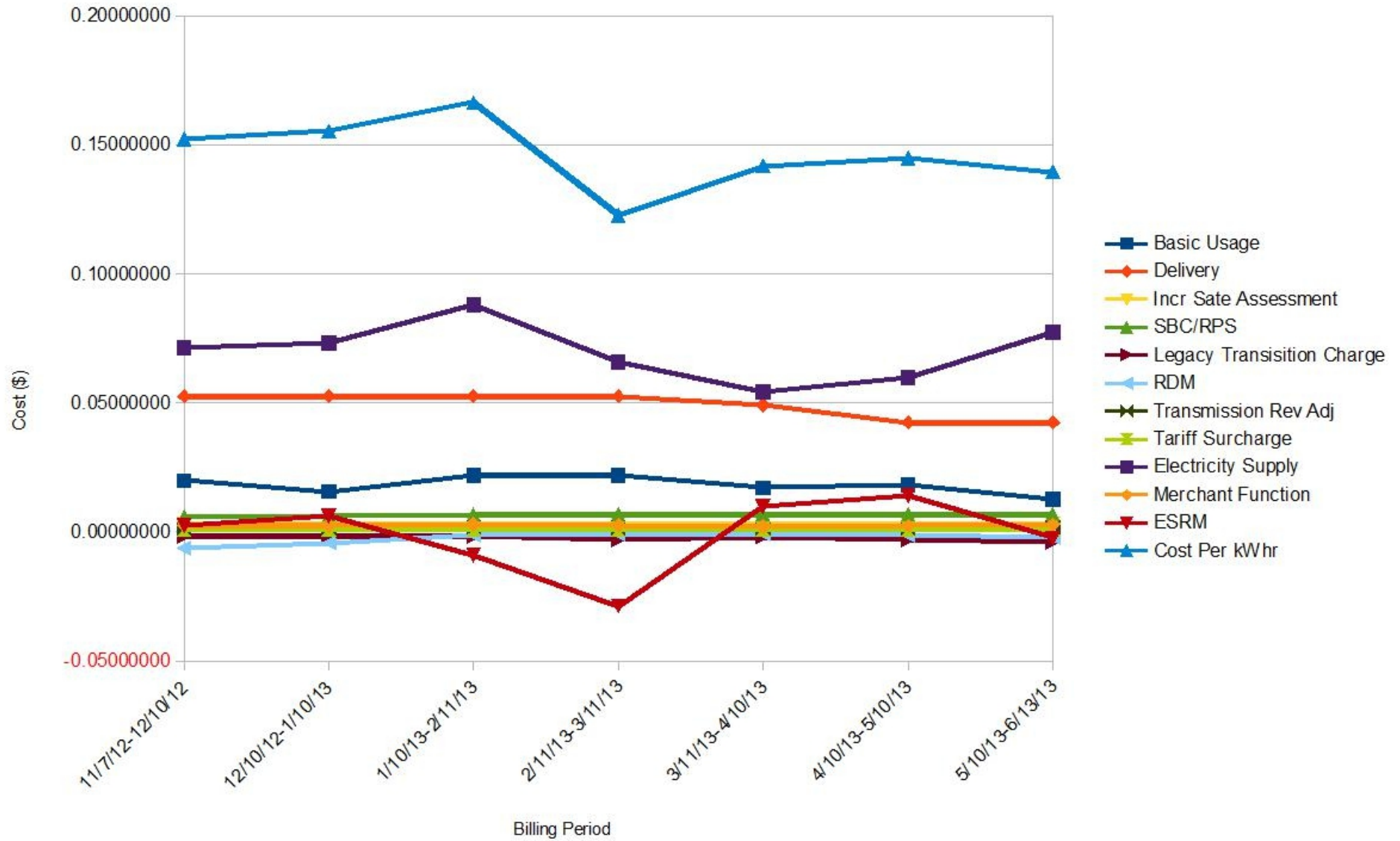
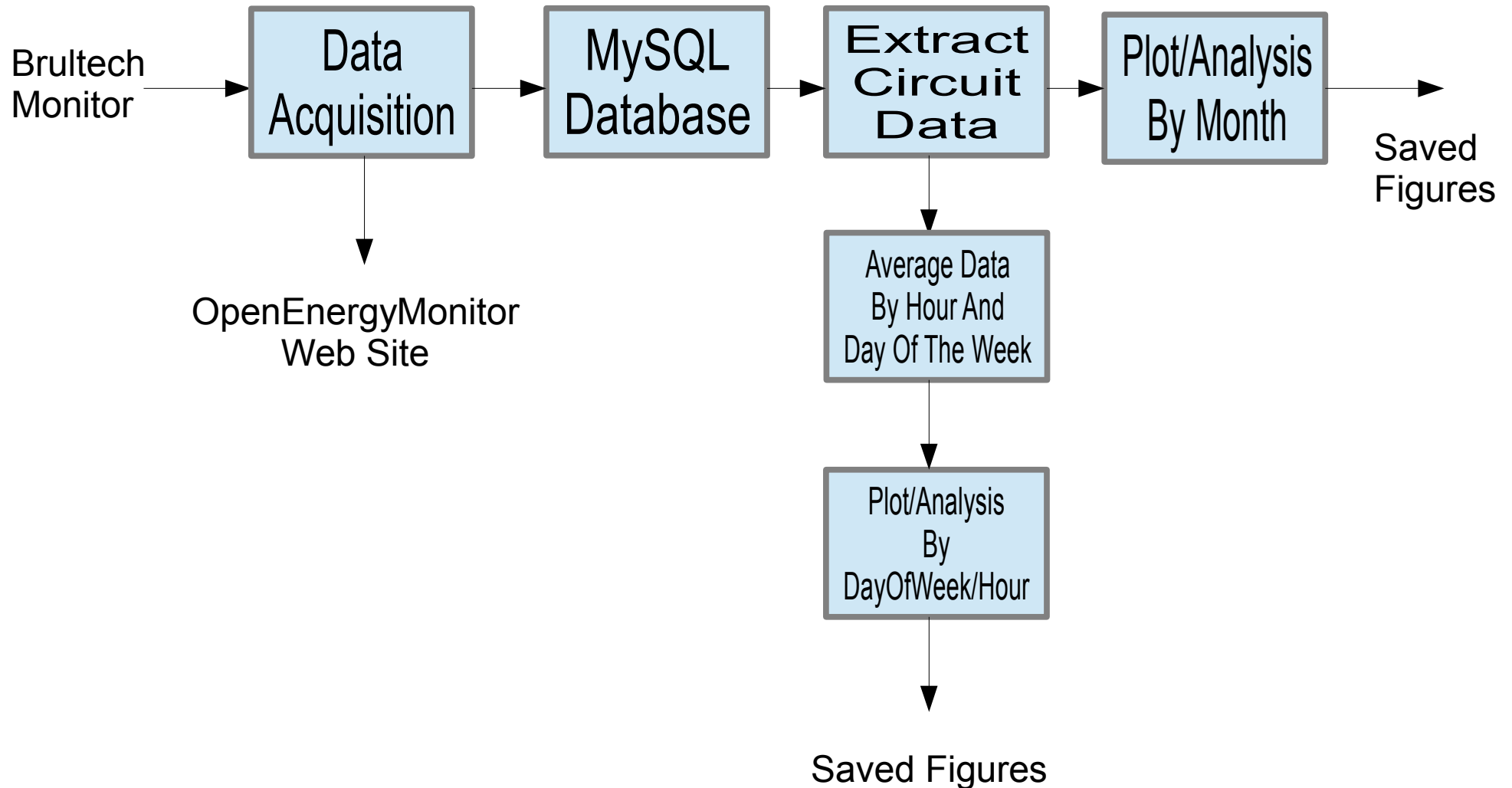


Energy Monitoring 2013

Electricity Cost Elements



Data Processing & Analysis

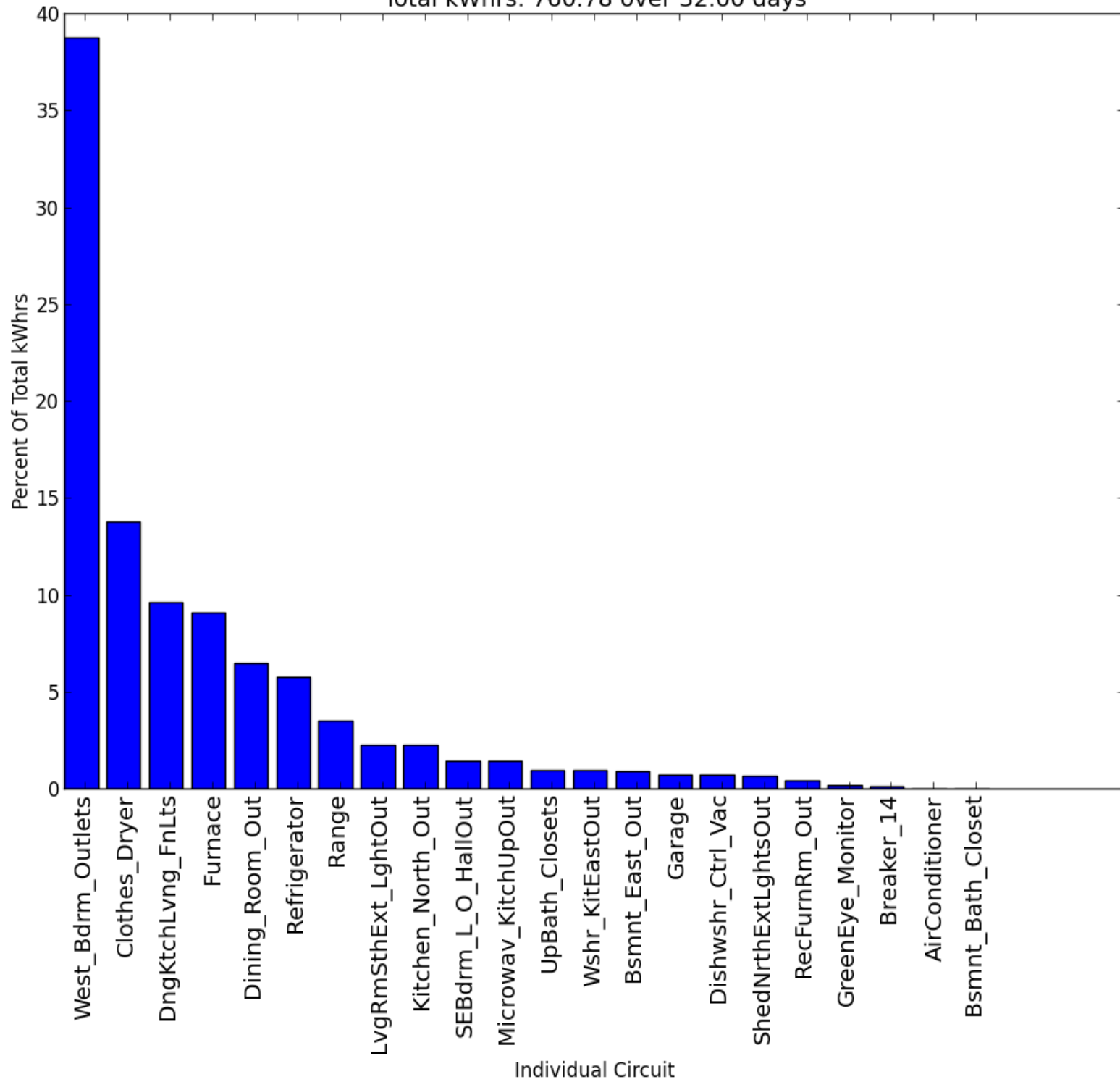


Figures/Plots

- Plots based upon all data, daytime data (7AM-11PM), nighttime data
 - Sorted bar graph of monthly cost contribution per circuit
 - Sorted bar graph of percent of total kWhr usage per circuit
 - Histogram of wattsec samples binned in 50Ws increments
 - Time between samples (to check frequency and severity of missing data)
 - Mains – total of individual circuits per sample (to check for inconsistencies in data)
- Plots based on samples averaged by hour and day of the week (DOW)
 - Heat map (2D image DoW vs. Hr where magnitude is represented on a color scale)
 - Bar graph of average and standard deviation by hour and by day of week

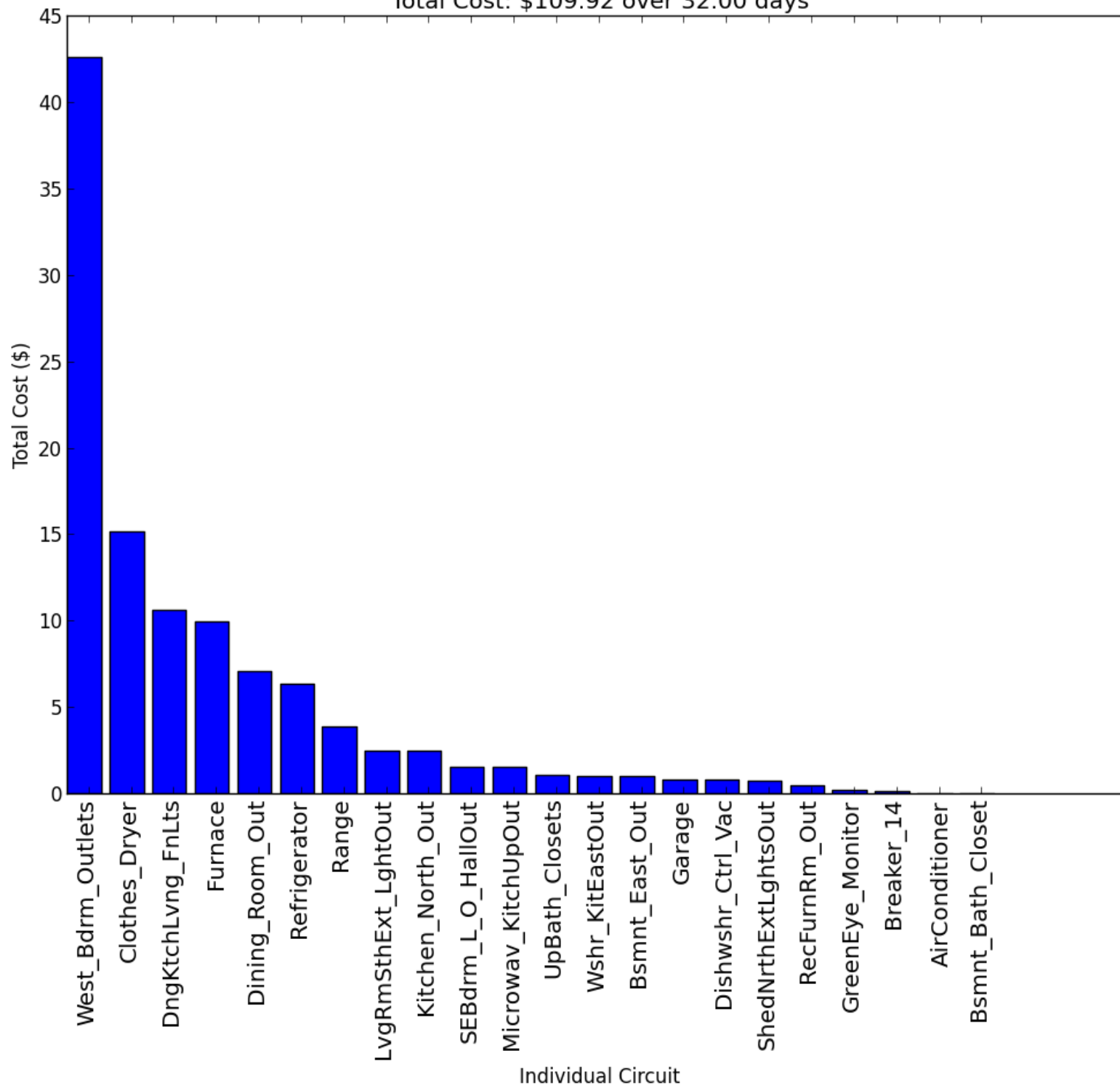
Jan 10 – Feb 11

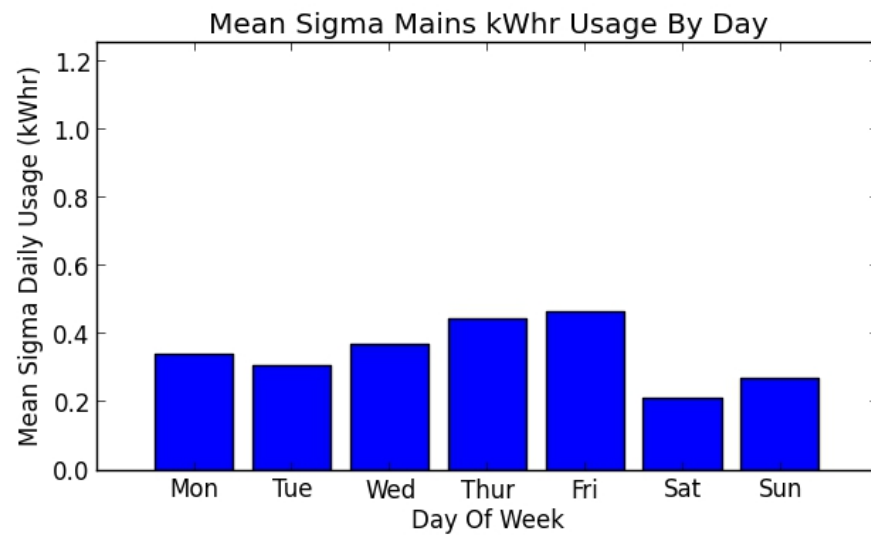
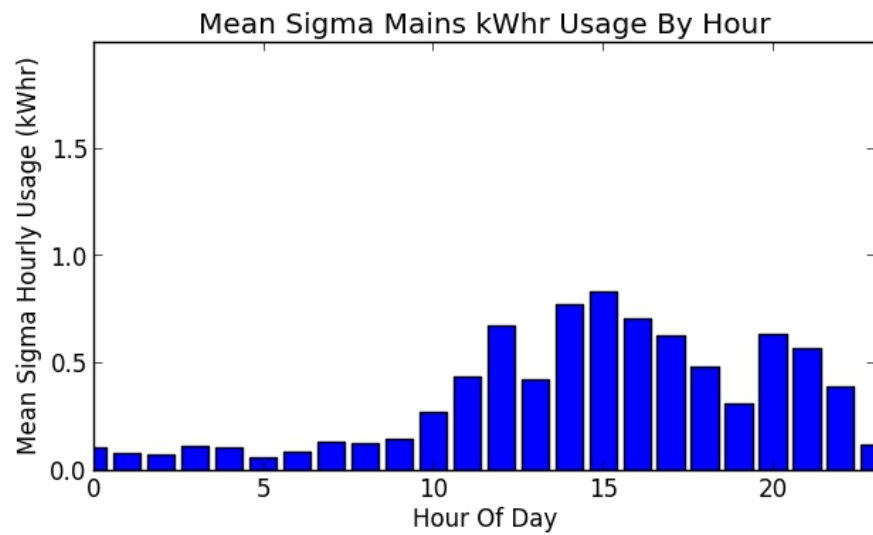
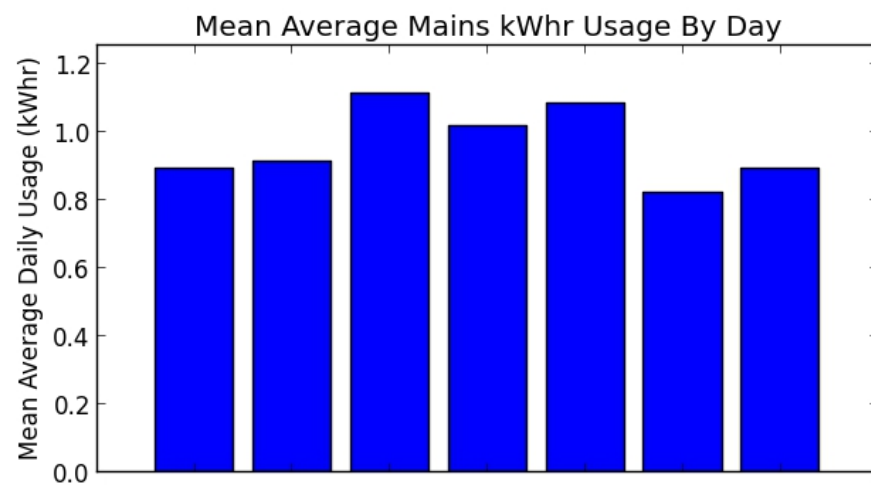
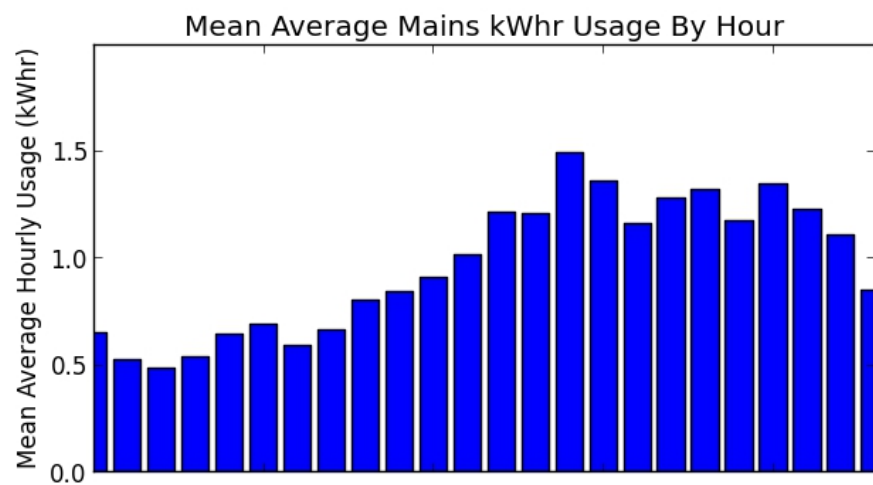
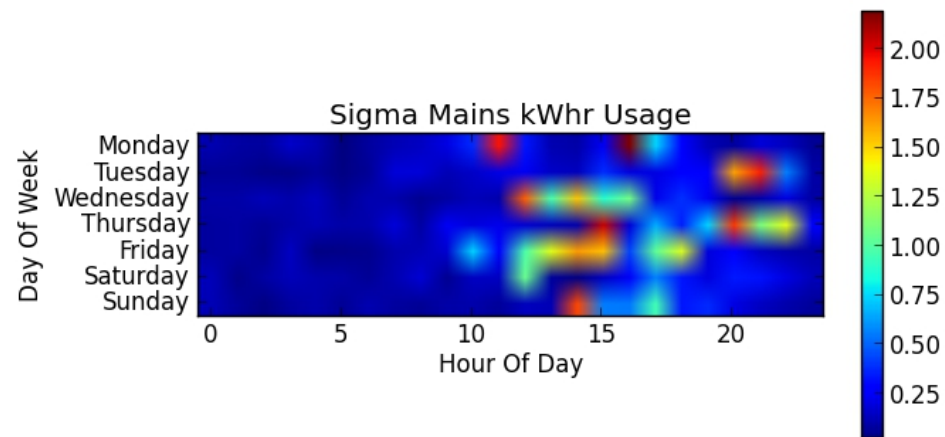
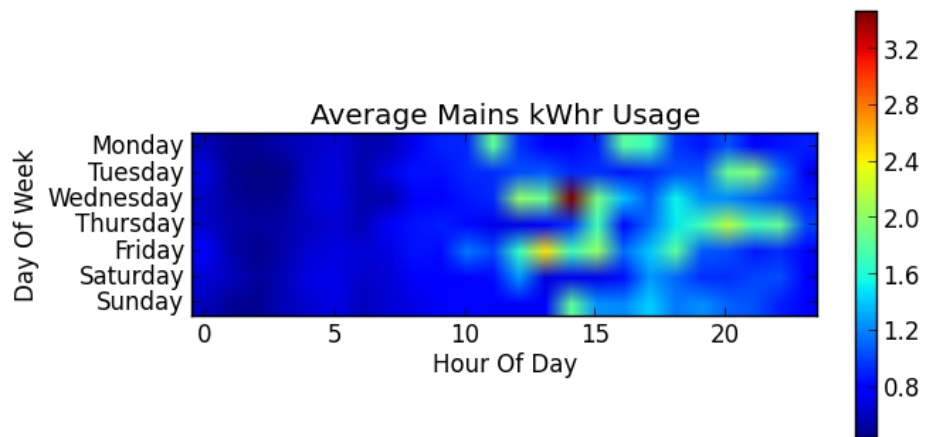
Overall Ordered Percent Usage By Individual Circuit
Total kWhrs: 760.78 over 32.00 days



Overall Ordered Total Cost By Individual Circuit

Total Cost: \$109.92 over 32.00 days

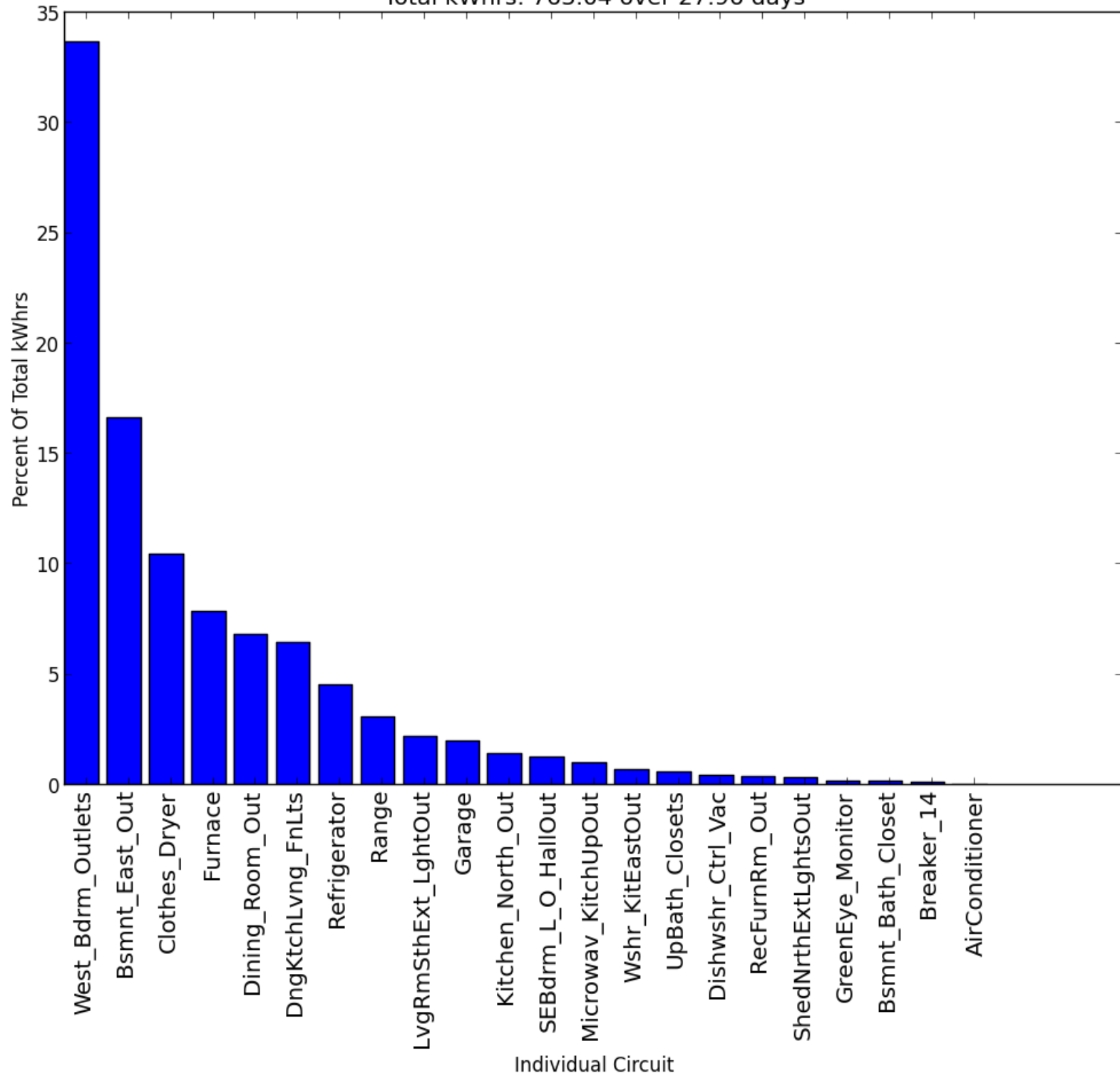




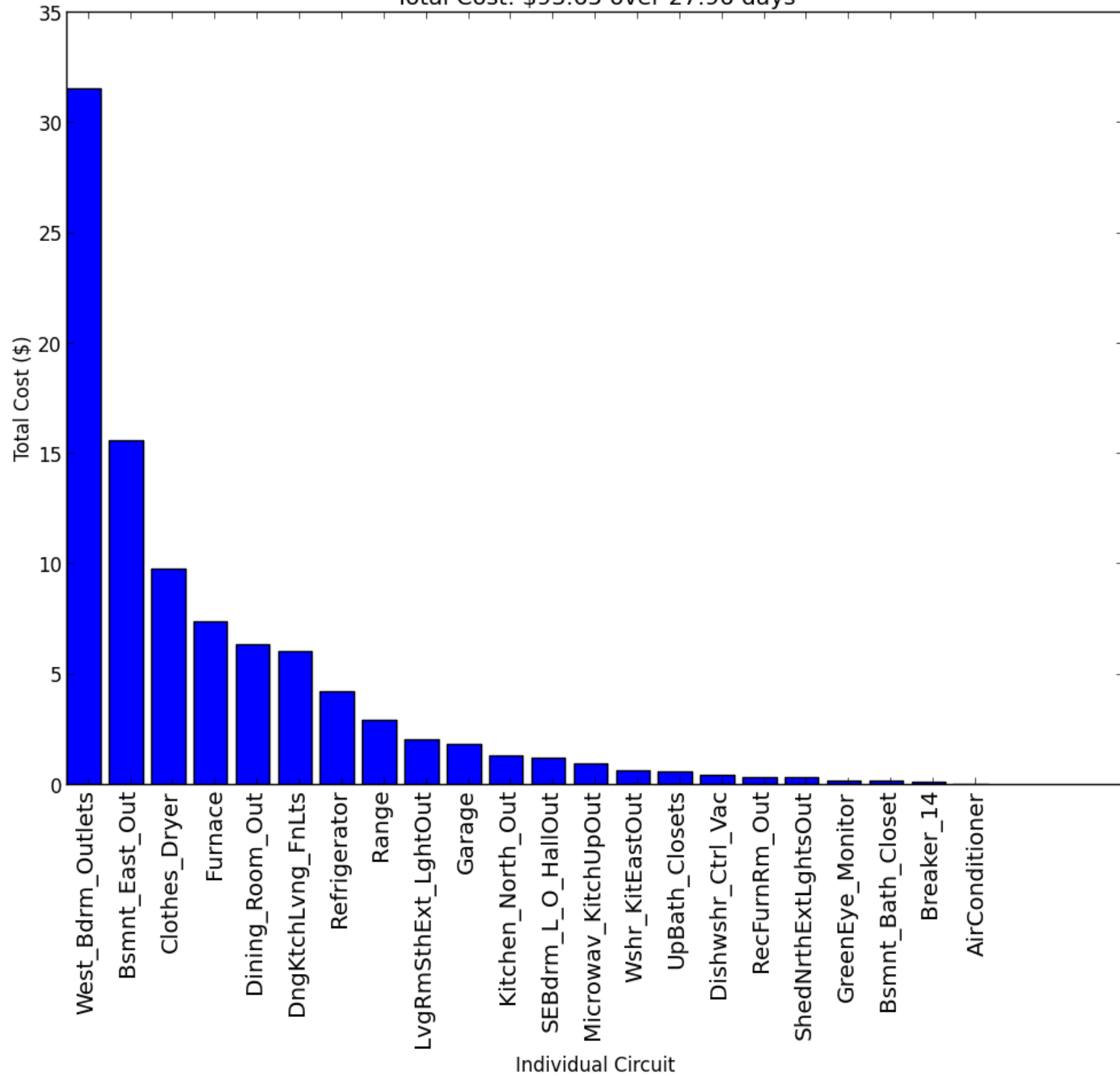
February 11 – March 11

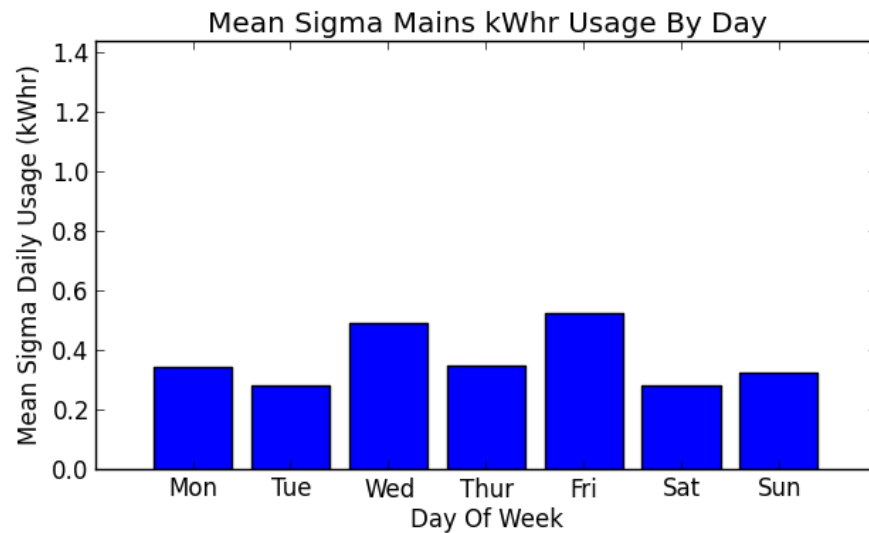
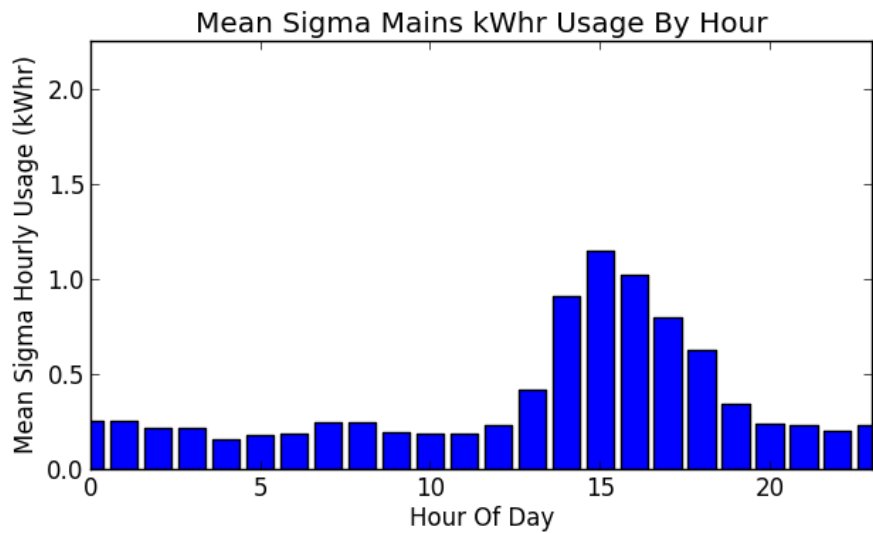
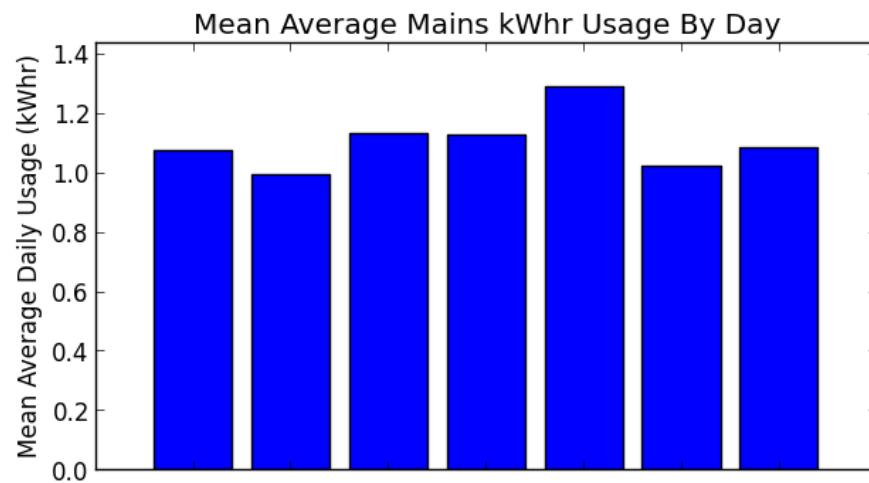
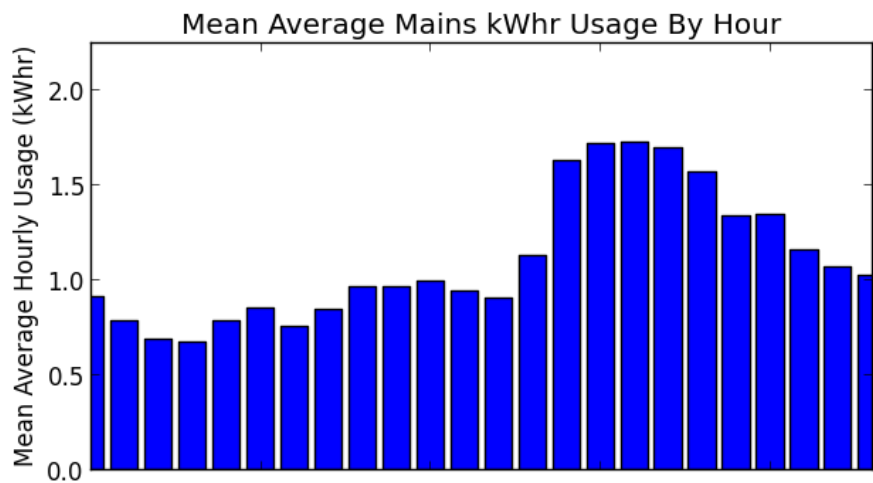
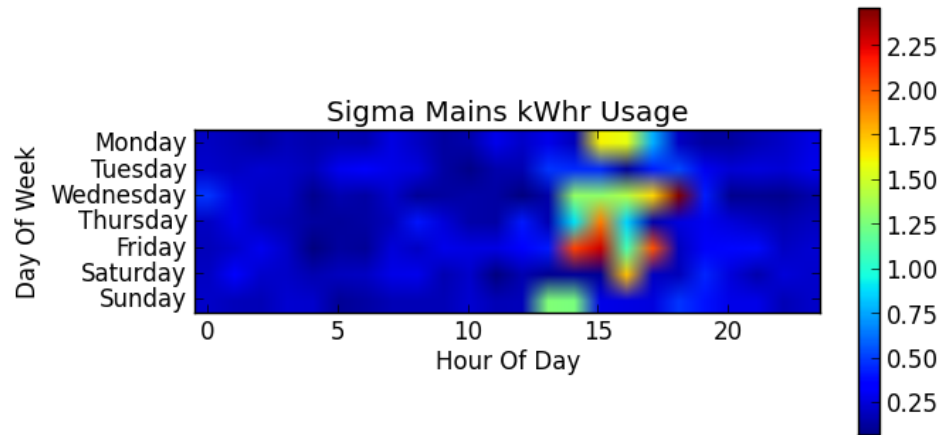
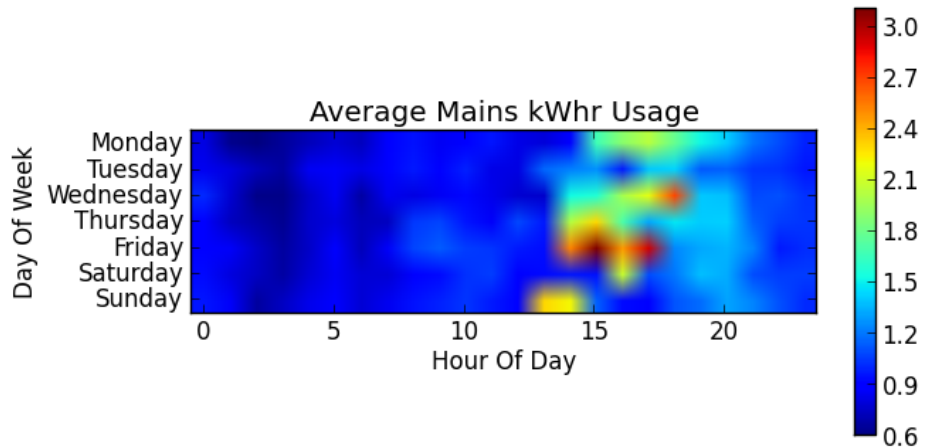
- Installed new dehumidifier in basement on February 24th

Overall Ordered Percent Usage By Individual Circuit
Total kWhrs: 763.04 over 27.96 days



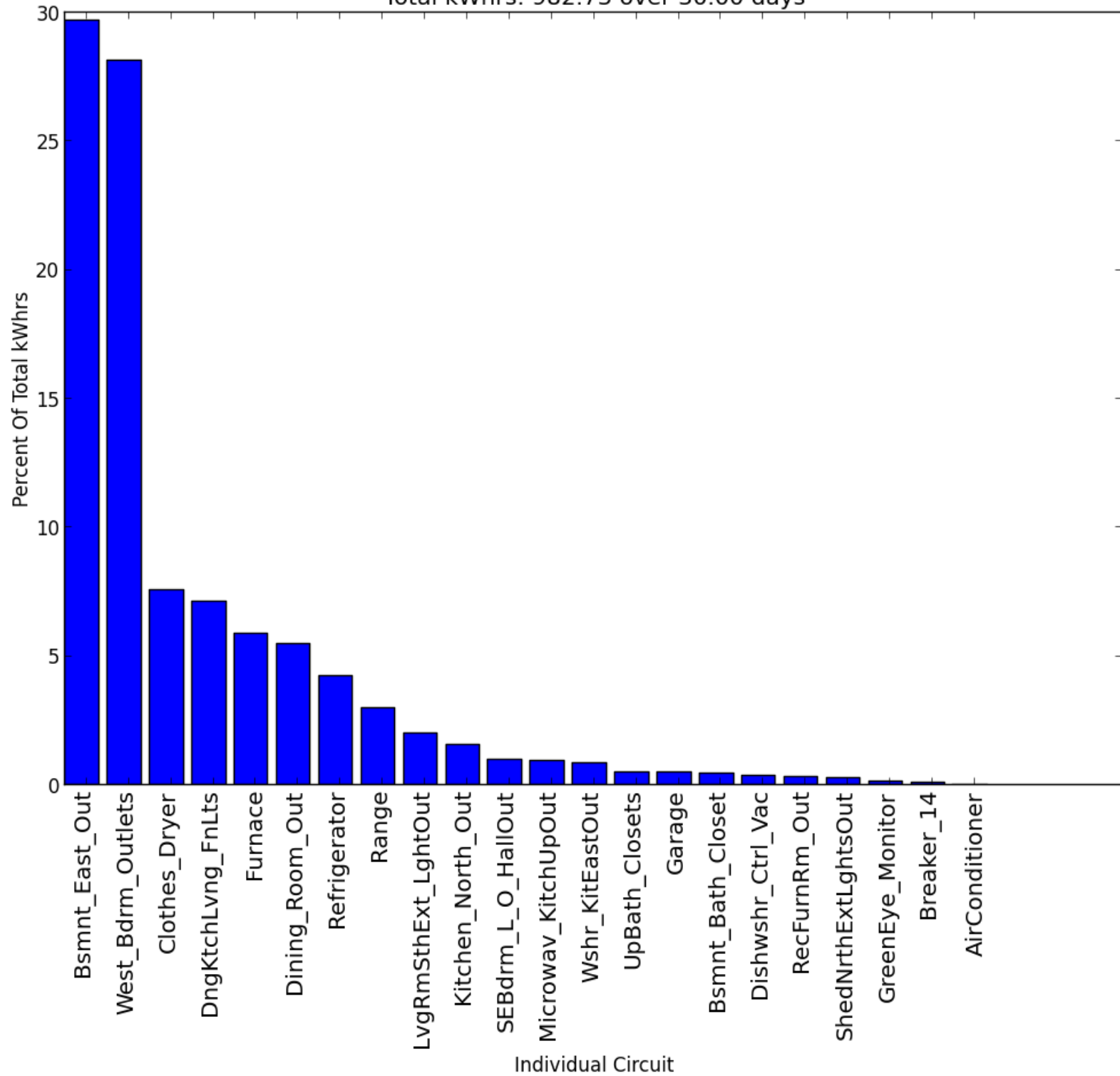
Overall Ordered Total Cost By Individual Circuit
Total Cost: \$93.65 over 27.96 days



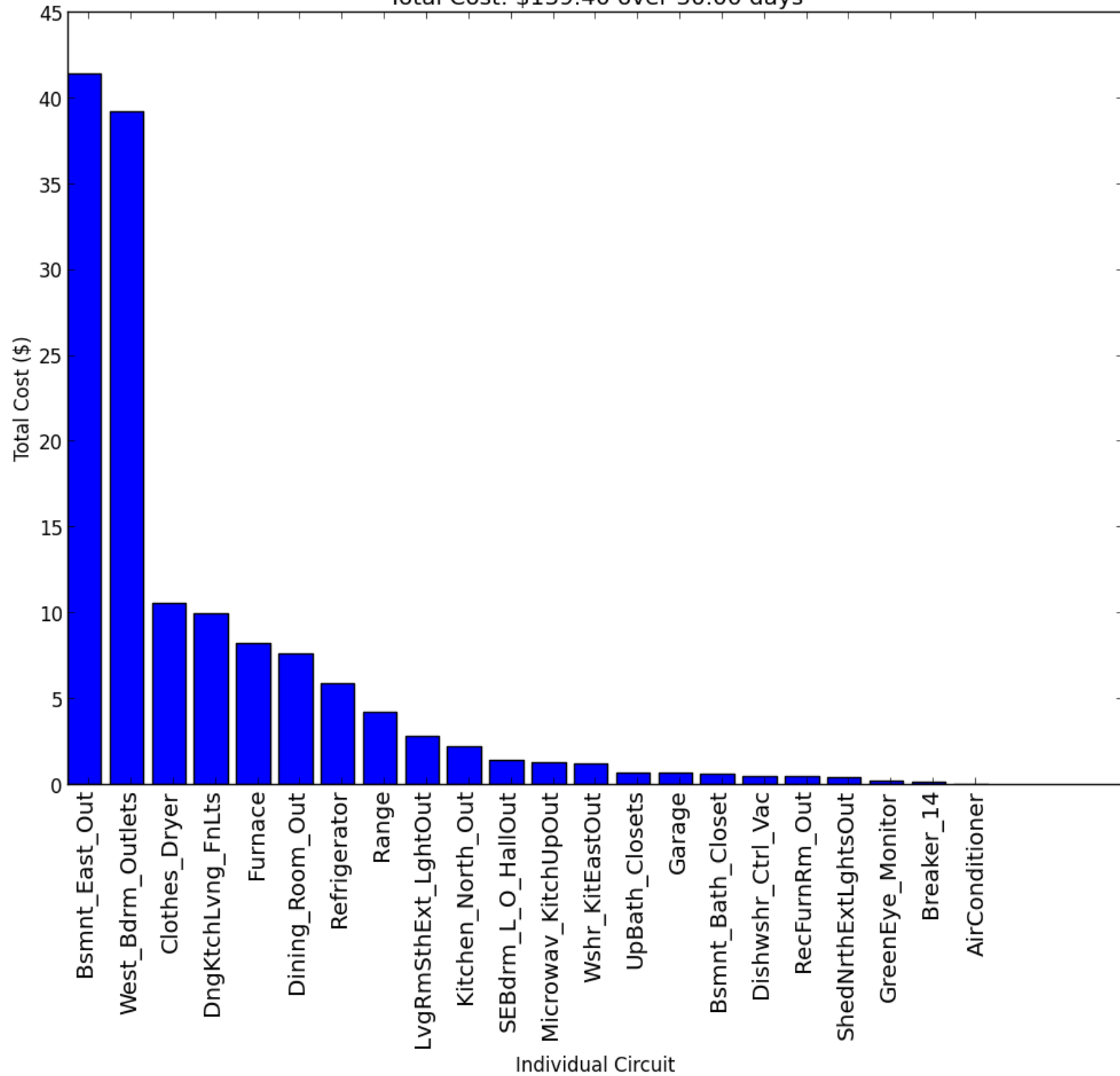


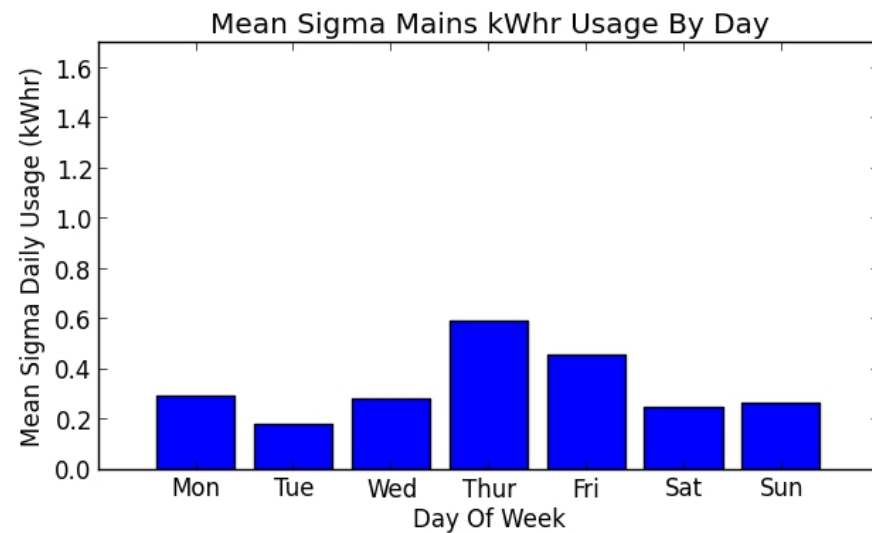
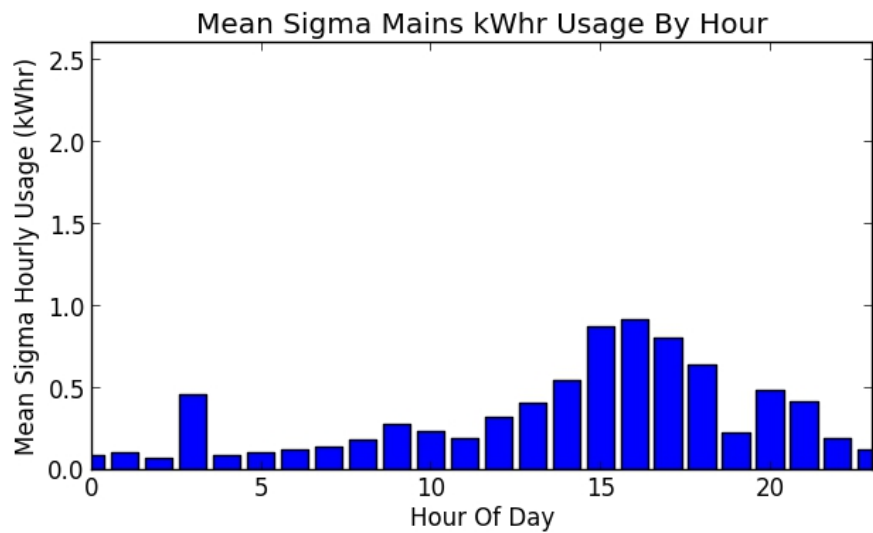
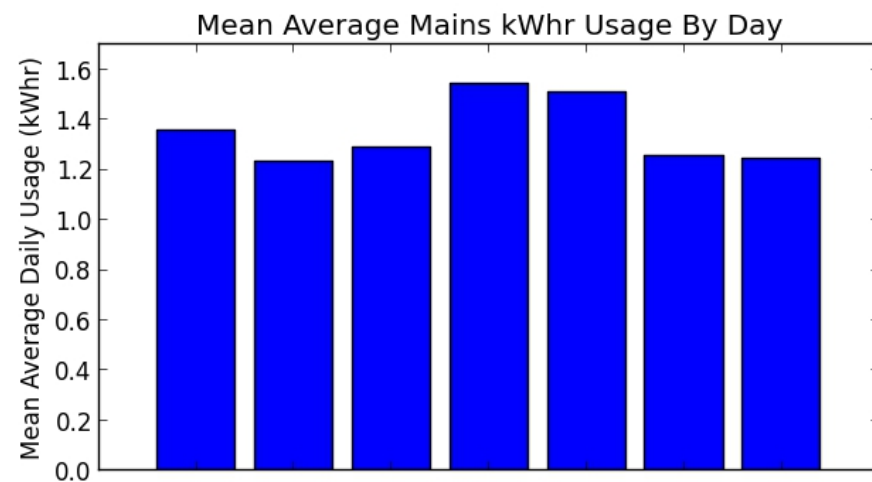
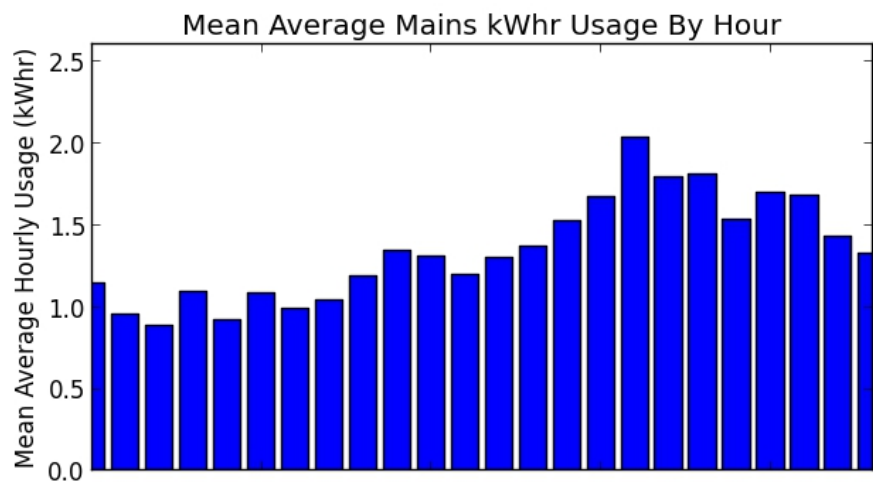
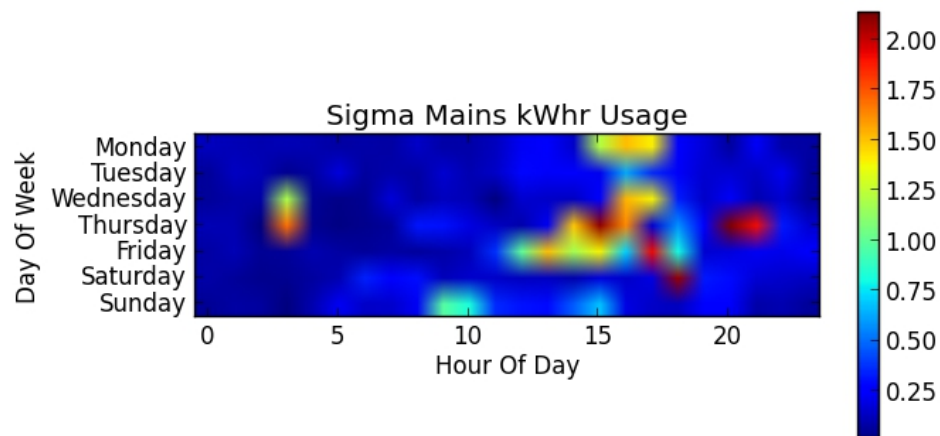
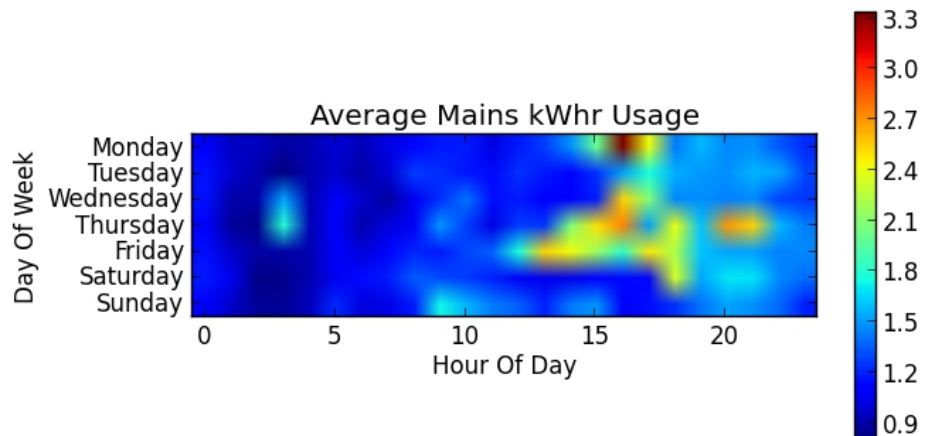
March 11 – April 10

Overall Ordered Percent Usage By Individual Circuit
Total kWhrs: 982.73 over 30.00 days



Overall Ordered Total Cost By Individual Circuit
Total Cost: \$139.40 over 30.00 days

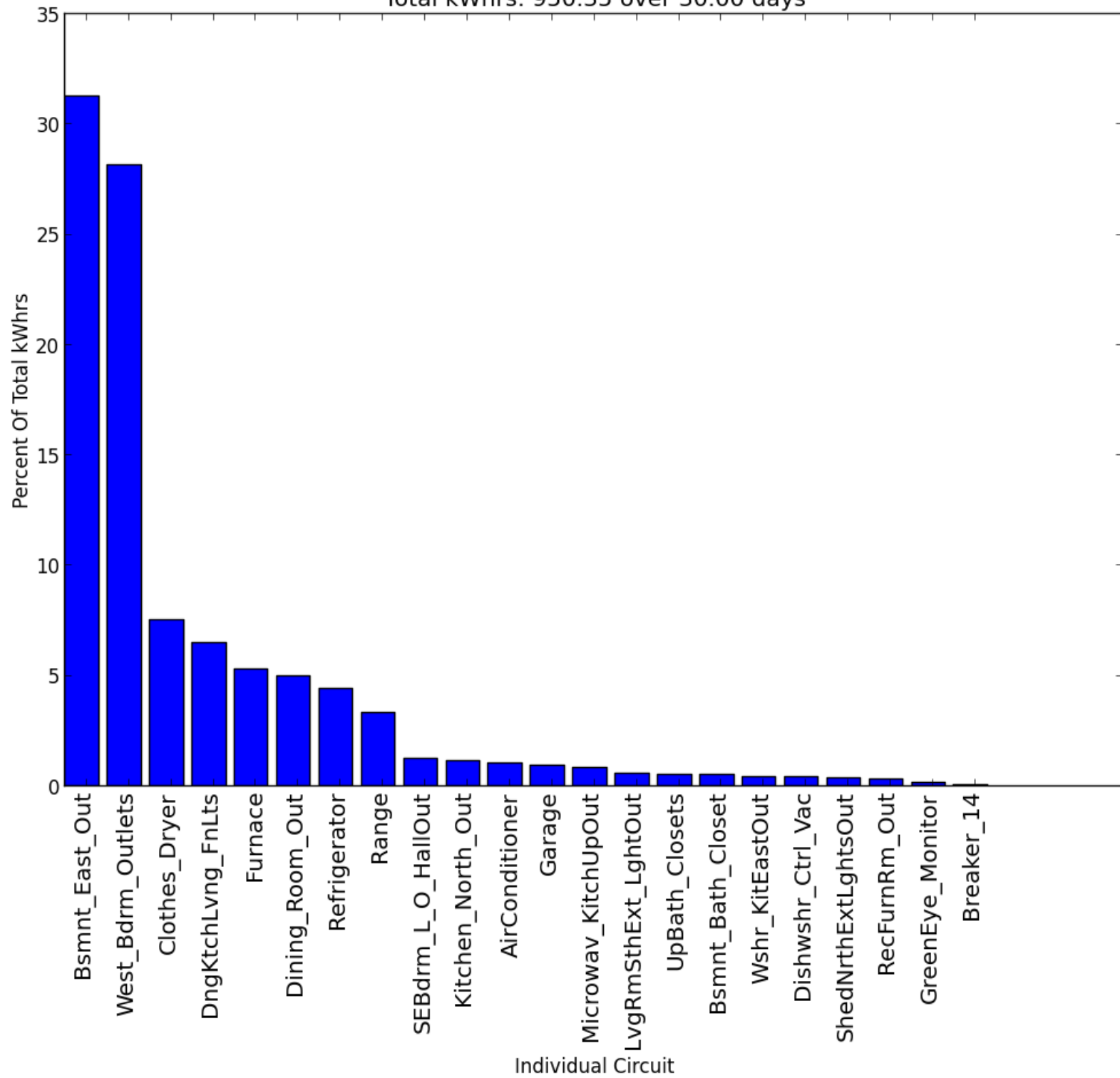




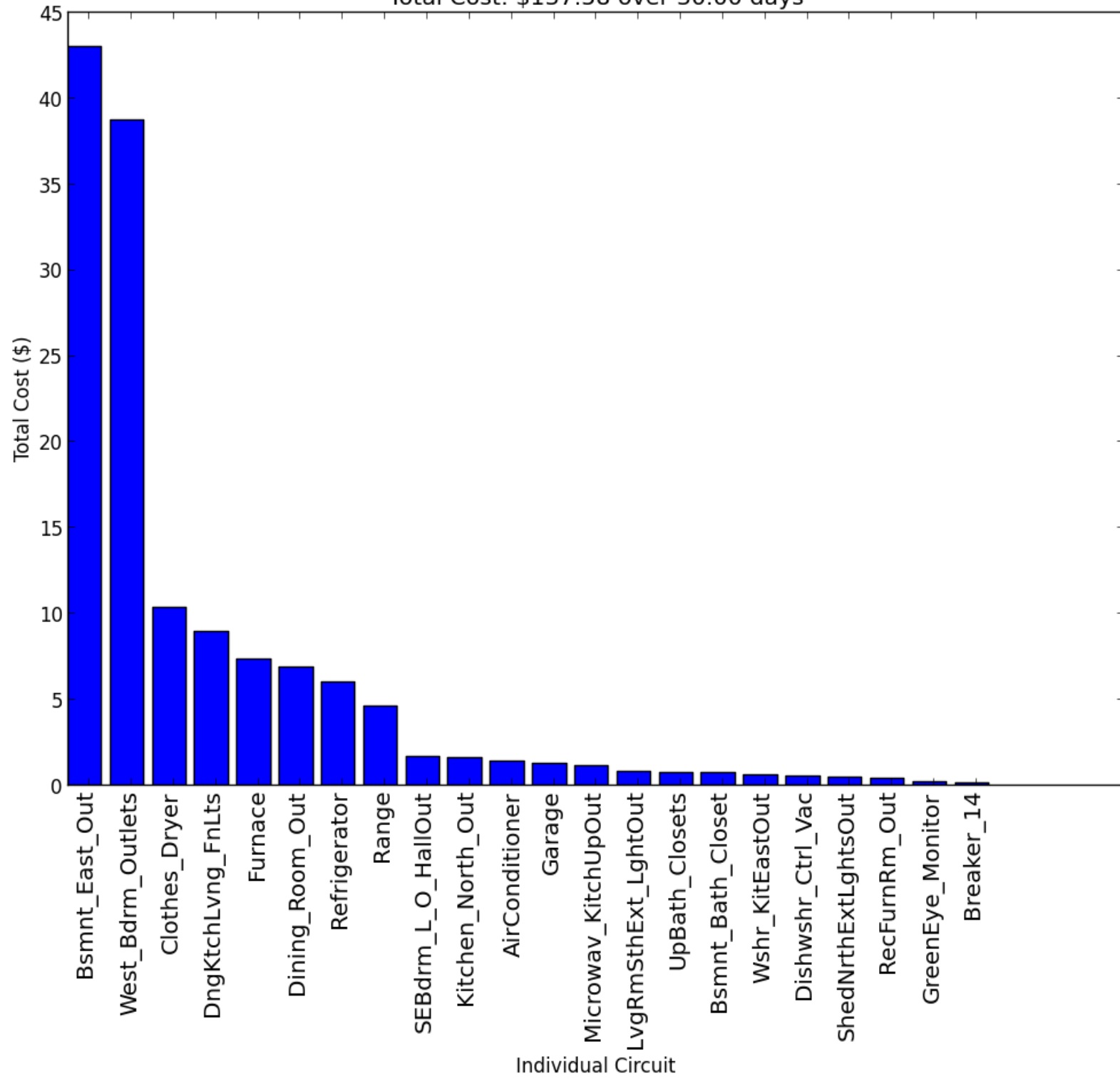
April 10 – May 10

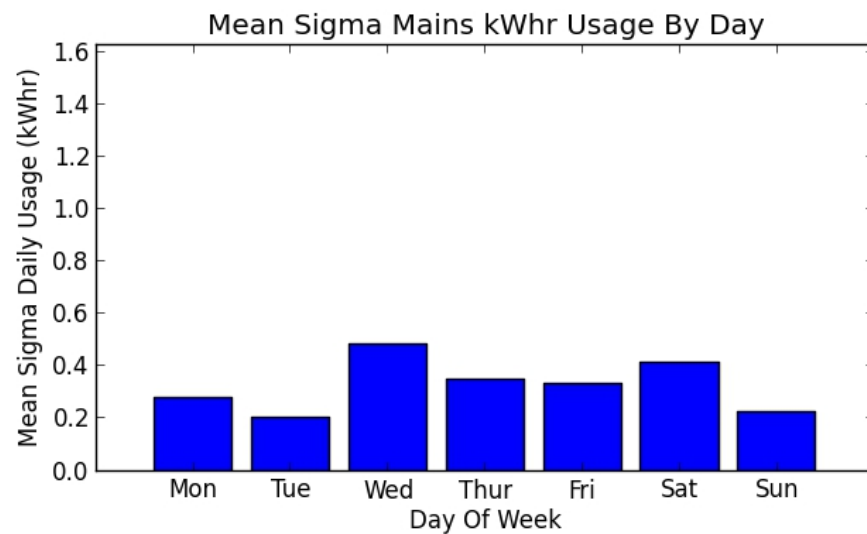
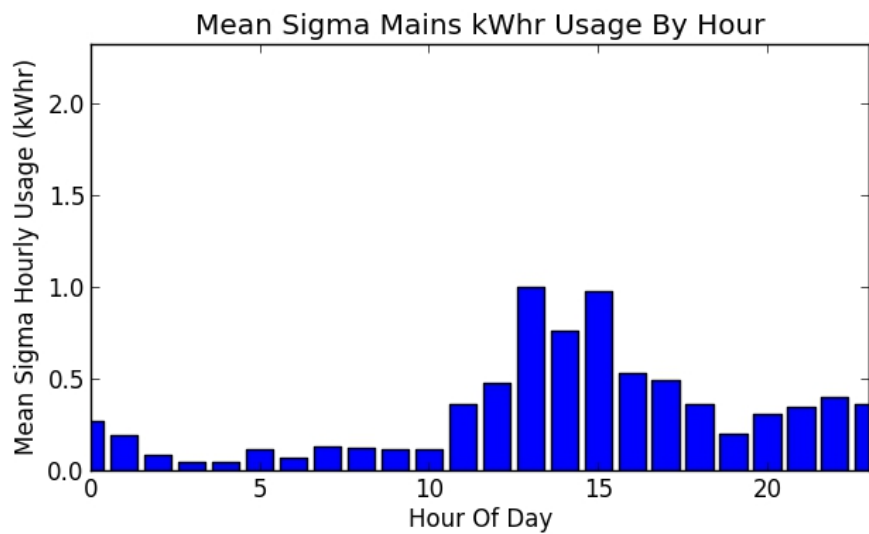
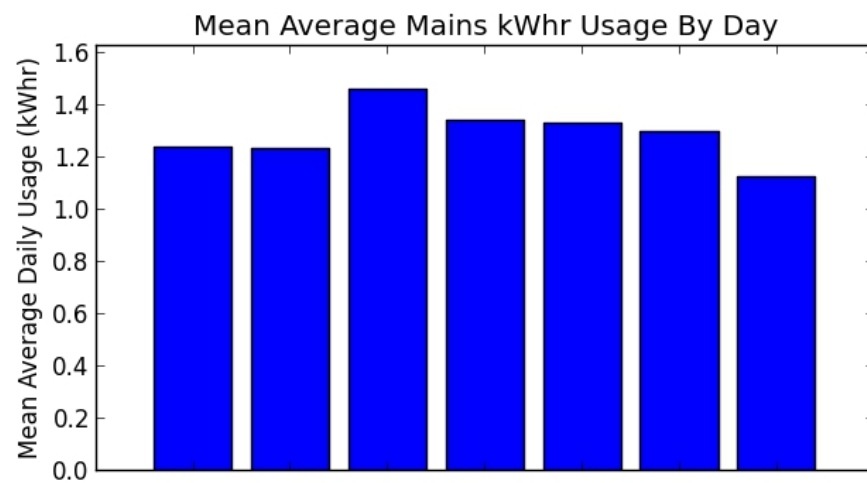
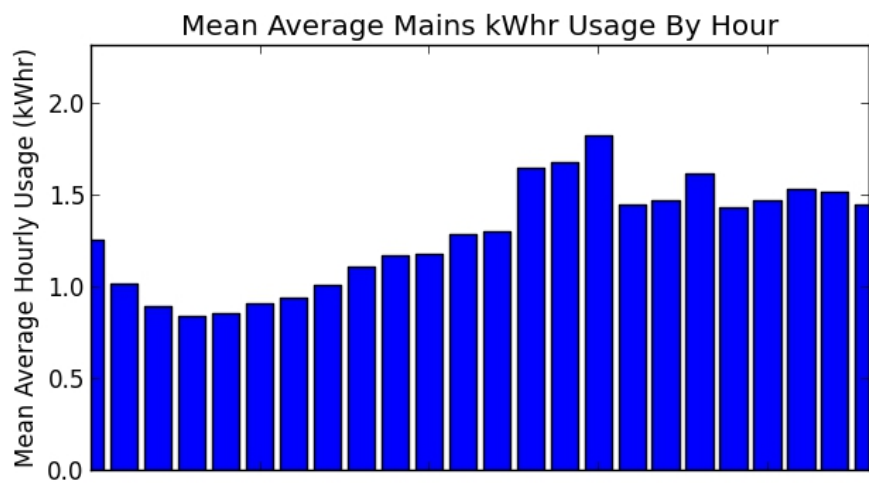
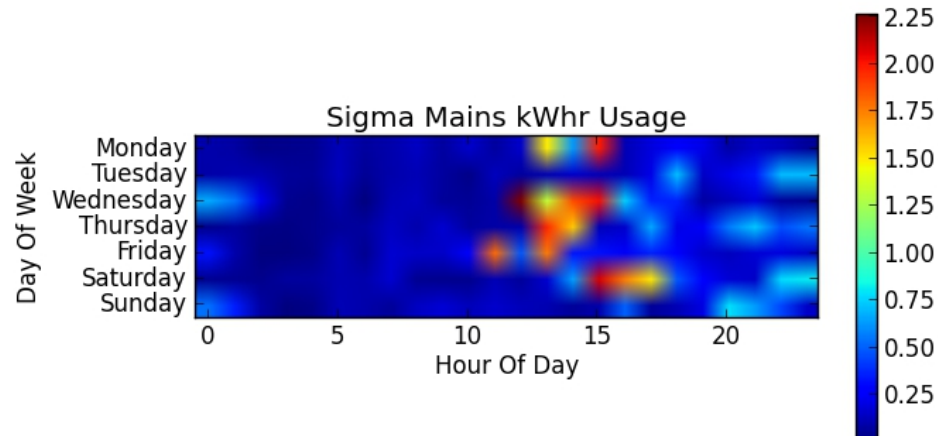
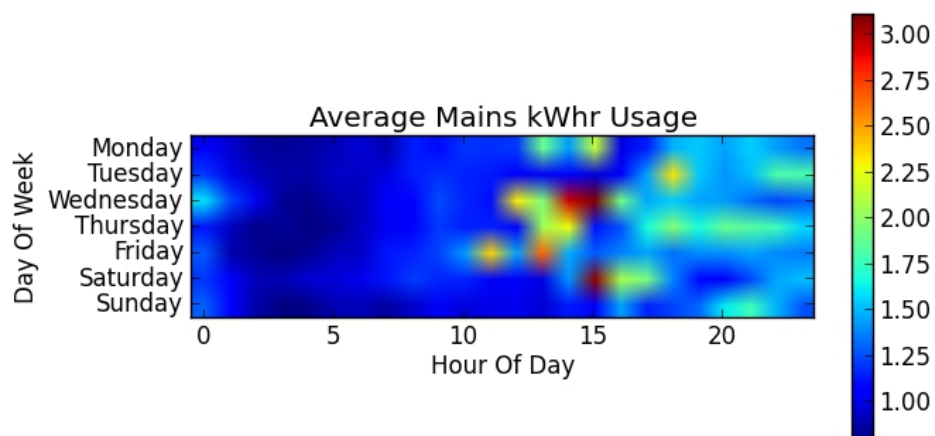
- Began intermittent use of air conditioning system on May 3rd

Overall Ordered Percent Usage By Individual Circuit
Total kWhrs: 950.35 over 30.00 days



Overall Ordered Total Cost By Individual Circuit
Total Cost: \$137.58 over 30.00 days

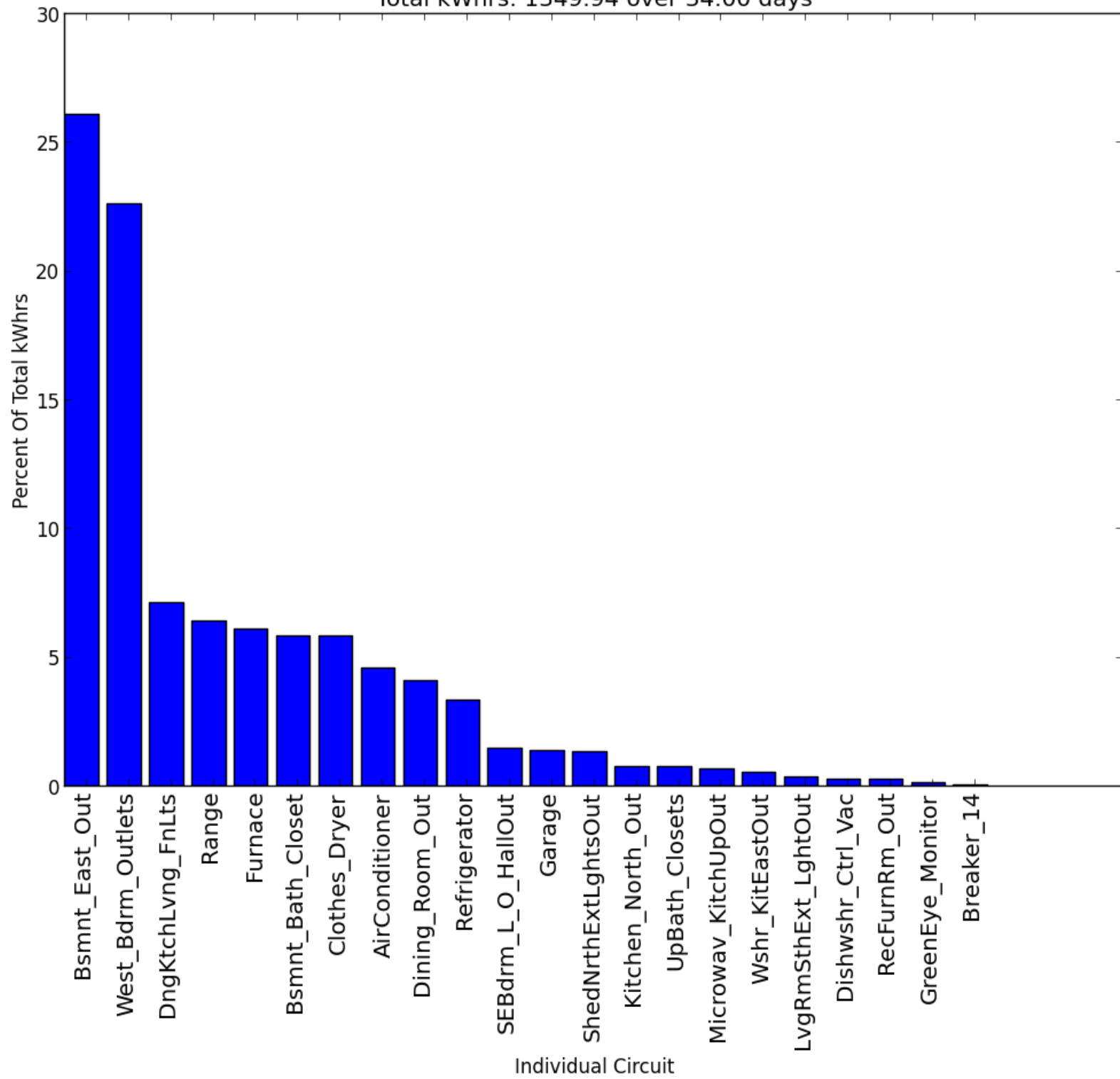




May 10 – June 13

- Continued intermittent use of air conditioning system

Overall Ordered Percent Usage By Individual Circuit
Total kWhrs: 1349.94 over 34.00 days



Overall Ordered Total Cost By Individual Circuit
Total Cost: \$188.37 over 34.00 days

